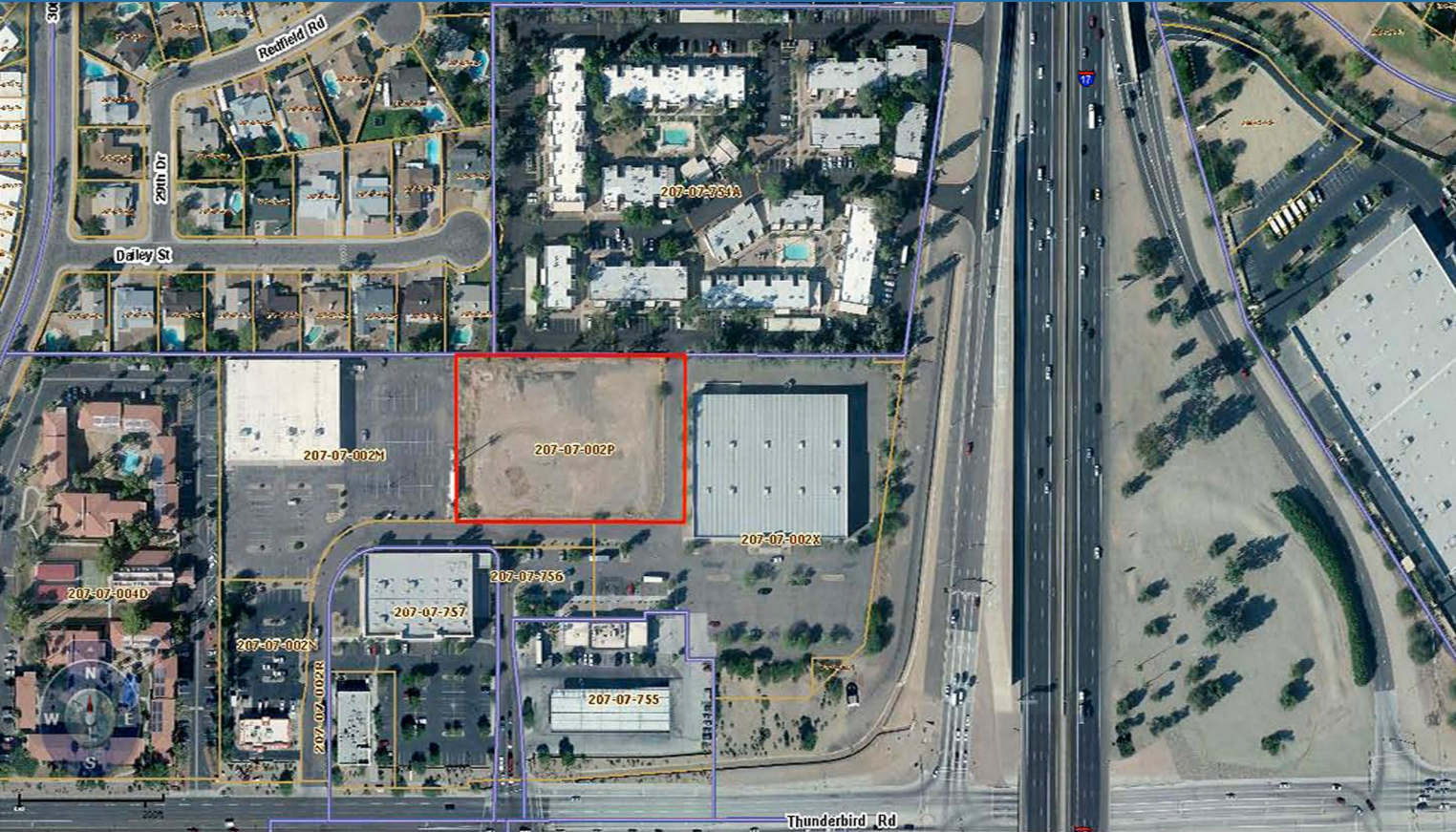


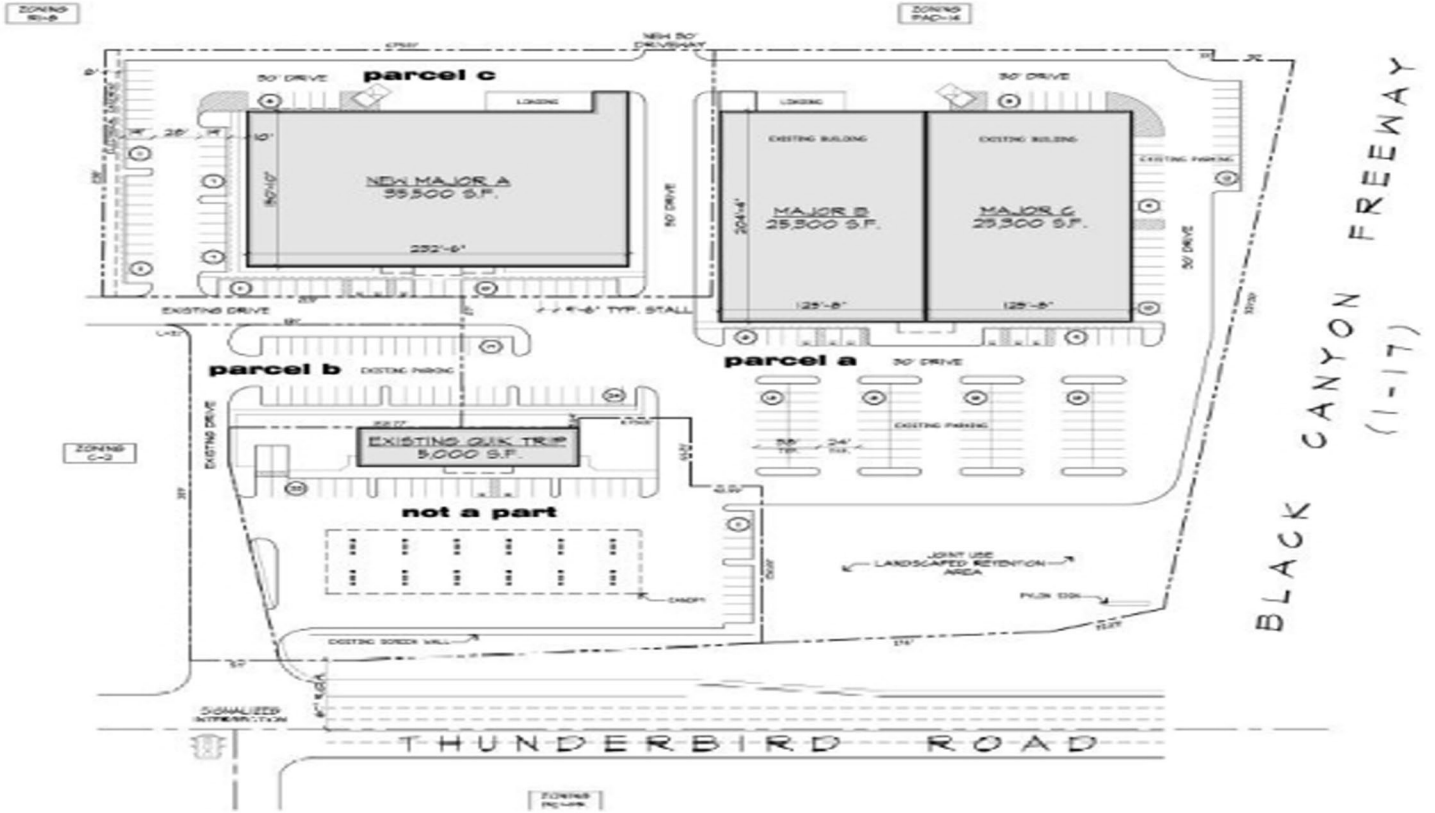
2710 W. THUNDERBIRD ROAD PHOENIX, AZ 85053



2710 W. THUNDERBIRD ROAD PHOENIX, AZ 85053



2710 W. THUNDERBIRD ROAD PHOENIX, AZ 85053



Potential Development
Subject to City of Phoenix Approval

COWTOWN LAND INFO

2710 W. Thunderbird Rd | Phoenix, Arizona

PARCEL: 87,120 SQUARE FEET

FREEWAY SIGNAGE: AVAILABLE

ASSESSOR I.D.: 207-07-002P

MUNICIPALITY: PHOENIX, ARIZONA

ZONING: CURRENT ZONING C-2

AREA: 2 ACRES

PRICE: NEGOTIABLE